

What You Can Do

The Clock is Ticking...

Take These Actions NOW!

WRITE LETTERS:

Sandra Squire, Executive Secretary
Public Service Commission
P.O. Box 812
Charleston, West Virginia 25323
[Reference CASE NO. 09-0770-E-CN]

BECOME AN INTERVENOR:

Citizens who have a **legal interest may intervene** in the case but must file within 30 days last publication date (i.e. by the end of June, 2009).

ATTEND PUBLIC HEARINGS:

(Submit comments and speak if you're comfortable with doing so)
- dates and locations to be announced.

SIGN PETITIONS:

Petitions will be available at meetings and hearings.

GET INFORMED:

Sign up to receive email notices or phone calls about upcoming events.

CONTACT YOUR STATE AND FEDERAL LEGISLATORS:

Call or Write --- Share your concerns.

POSSIBLE CONCERNS:

(even if the line isn't directly over your head or home)

- damage to land/livestock/crops
- permanent loss of timberland
- loss or devaluation of property
- quality of life
- environmental consequences
- perceived health threat
- personal sacrifice
- eminent domain
- increased rates for all WV customers

THE WEST VIRGINIA PUBLIC SERVICE COMMISSION (PSC)

“Application for Certificate of Public Convenience and Necessity”

Prior to construction the PATH transmission line must have received approval of a Certificate of Need from the West Virginia Public Service Commission

PATH filed their application with the PSC on May 15, 2009.

The case number is 09-0770-E-CN.

The PSC has 400 days to act.

The application and other relevant case details can be found on the West Virginia Public Service Commission website (Copies of the application are also available in the County Libraries, County Commission offices, and PATH website - see information on the back of this flyer.)

The question that must be answered:

IS PATH NEEDED?

1) PEAK DEMAND

■ PJM's centralized generating and transmission system is sufficient for most of the year. PJM Interconnection based its argument for the need for PATH entirely on those few times a year when in the dead of winter or heat of summer the furnaces and air-conditioners in residences and businesses along the east coast crank up.

■ Peak loads can be managed in a much more efficient and economical way closer to the point of demand by local plants that can be turned on and off more quickly than the large coal-fired plants hundreds of miles away in the Ohio River Valley.

2) DEMAND SIDE MANAGEMENT (DSM) - REDUCING DEMAND

■ PJM's proposal for this 765 kV PATH transmission line promotes huge investments in new but obsolete plants and

lines that are only needed to meet those peak demands.

■ A more efficient and economical way of meeting those needs is to reduce demand by offering incentives to use less electricity at peak hours, eg. run washers and dryers at different hours of the day, etc. ... Case in point: California put in place mandated DSM and energy efficiency standards in the 1970's and has seen per capita electricity use remain constant since the late 1970's. In the US as a whole, over that same time period, per capita electricity use increased 9% each decade!

3) BASE LOAD

■ Not only can we reduce the need for new transmission lines by decreasing demand. We also now have electrical power generating technologies that allow us to create a safer, less polluting, more reliable electrical grid based on local diversified generating plants. We should encourage investment in these newer electrical power technologies that allow solar, wind and other renewables to become more consistent sources of energy. Paying through the nose to build obsolete coal-fired dinosaurs far from customers and shipping “coal by wire” hundreds of miles is an unreasonable investment in an inherently insecure and unreliable system.

~~~~~

*“It doesn't make me feel very good as a West Virginian to know that we're going to end up with power lines and power plants from border to border. Is this what we want our state to become? Do we want to become a power provider to the east coast? What are we getting in return? We're losing our property values. We're losing our property rights. We're losing our quality of life. Are all of these issues being addressed by our state government? We don't think they are.”*

- Don Corwin, Monongalia County

## **PATH FACTS:**

### **Potomac-Appalachian Transmission Highline**

765 kV (kilovolt) transmission line

140 -160 foot high metal towers

224 miles across West Virginia

- from John Amos Power Plant (St. Albans)
- northeast through WV to Capon Bridge
- crossing through VA to Jefferson County
- ending at Kemptown MD

Cuts through 14 West Virginia Counties - Putnam, Kanawha, Roane, Calhoun, Braxton, Lewis, Upshur, Barbour, Preston, Tucker, Grant, Hardy, Hampshire and Jefferson.

**(NOTE: PATH is requesting permission to vary from it's proposed line to anywhere within 1,100 feet of either side of that line. In the recent TrAIL line case, the route was changed mid-way through the proceedings to one of the earlier options well outside of the proposed line.)**

200 ft cleared right-of-way  
(200 ft x 200 ft = 1 acre land)

### **ESTIMATED COST: \$1.8 billion**

- **plus** a guarantee of 14.3% return of equity (--- What does that mean? It means you and I don't get the power that travels through the line to the east coast, but we do have to pay for it. ....Our rates will be increased enough to repay the cost of building and maintaining PATH.)

~ ~ ~ ~ ~

*"PATH is like a super highway running nearly 250 miles through WV, but with no exits. The electricity goes straight to the east coast but the rate payers of WV pay for the construction and upkeep of the line."*

- Tim Higgins, Upshur County

## **FOR MORE PATH INFORMATION:**

[www.calhounpowerline.wordpress.com](http://www.calhounpowerline.wordpress.com)  
the Power Line blog  
info and links to other websites

[www.wvcitizensagainstPATH.com](http://www.wvcitizensagainstPATH.com)  
two great videos, power point and more

<http://blogs.wvgazette.com/coaltattoo/category/power-lines/>  
Statewide newspaper blog re: power lines

<http://www.pecva.org/anx/index.cfm/1,517,2280,0,html/PATH-Application-Filed>

<http://notopath.org/>

~~~~~

COPY OF APPLICATION AVAILABLE AT:

- Upshur County Library
- Upshur County Commission

Or online at:

<http://www.pathtransmission.com/meetings/westvirginia.asp>

Documents and comments submitted in response to the application [Case No. 09-0770-E-CN] can be viewed at Public Service Commission website:

<http://www.psc.state.wv.us/scripts/WebDocket/viewCaseForWebViewForm.cfm?CaseID=36461>

[When the page opens, click on "activities" near the top of the page and it takes you to Page 1 (most recent) of PATH filings. Scroll down the list and open any of the documents by clicking on "view document".]

~~~~~

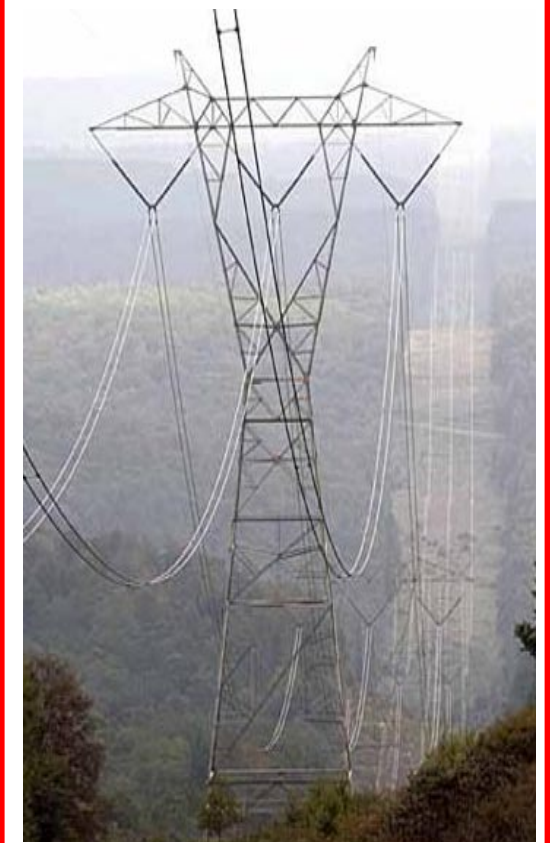
### **LOCAL UPSHUR COUNTY CONTACTS:**

**Tim**

lctvolvo@hughes.net  
304-472-9283

**Cindy**

clrank@hughes.net  
304-924-5802



## **Do you want this to be the landscape of Upshur County?**

**-LEARN MORE-**

June 16<sup>th</sup> at 6:30pm

Buckhannon-Upshur High School  
Auditorium

Doors Open at 6:00pm